

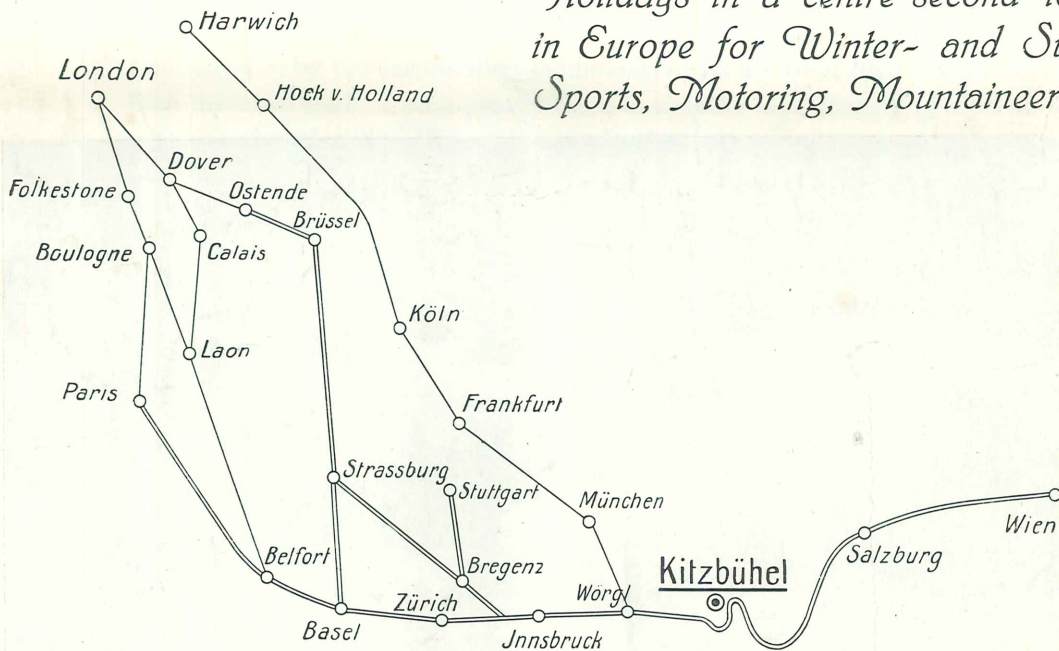
KITZBÜHEL SPORTS CLUB



KITZBÜHELER SPORT KLUB

The Kitzbühel Sports Club Kitzbühel Tyrol (Austria)

Founded for the express purpose of providing for British lovers of sport at a very moderate cost Summer and Winter Holidays in a centre second to none in Europe for Winter- and Summer-Sports, Motoring, Mountaineering etc.



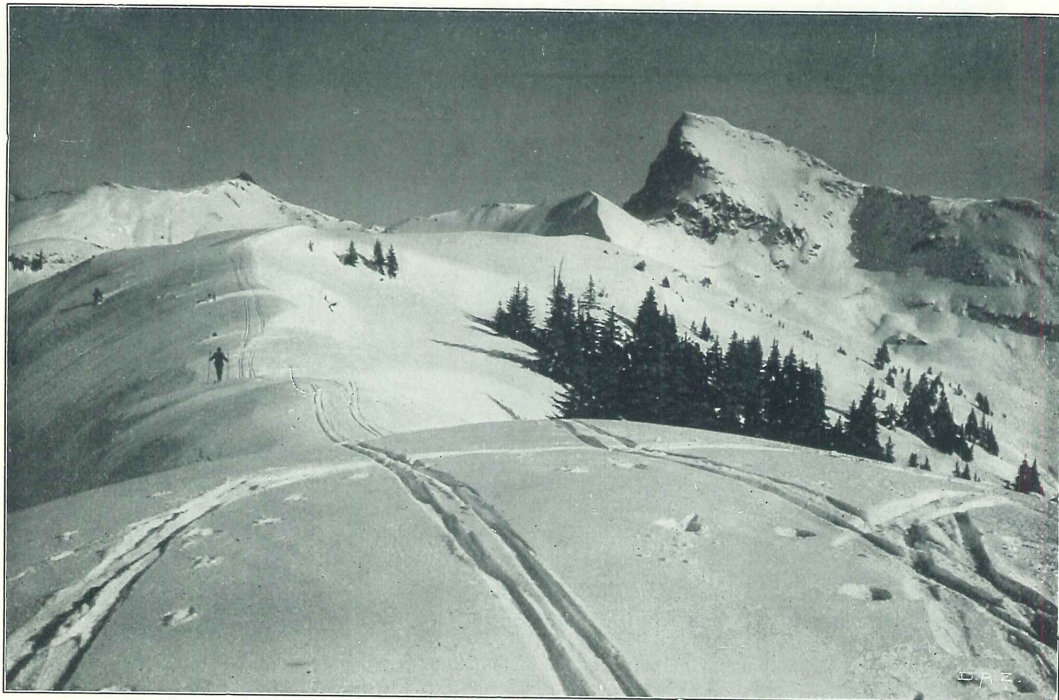
The best route from London to Kitzbühel is from Charing Cross: Folkstone, Boulogne, Laon, Basle, Zurich (Custom-house at Buchs), Innsbruck. Through tickets and luggage registered from Charing Cross to Kitzbühel. (Via Munich Custom-house at Kufstein.)

Members of this Club can spend a holiday in Kitzbühel and enjoy perfect Skiing, Skating, Bobsleighbing, Swimming, Motoring etc. under most ideal conditions at a cost of about 10/- per day, all inclusive.



Kitzbühel and the "Wilde Kaiser"

Photo by Ritzer



The "Gebra"

Photo by Ritzer

ADVANTAGES OF KITZBÜHEL

AS A WINTER AND SUMMER HOLIDAY RESORT

ACCESSIBILITY: Kitzbühel is on the Main Line from Paris and the Channel to Vienna. — All express trains stop at Kitzbühel.

Distance from London: 30 hours from Charing Cross (via Folkestone, Boulogne, Laon, Basle, Zuerich and Innsbruck)

Distance from Paris: 26 hours from Gare de l'Est (via Basle etc.)

Distance from Zuerich: 12½ hours by Main Line Train

Distance from Innsbruck: 2 hours ditto

Distance from Salzburg: 4 hours ditto

Distance from Vienna: 10 hours ditto

Distance from Munich: 6 hours via Kufstein—Rosenheim

CLIMATE: Kitzbühel, although 3000 feet high, is completely sheltered — but without being smothered — by the surrounding mountains which are from 2000—3000 feet higher than the town itself. Consequently there is almost a total absence of wind the whole year round and still sufficient breeze in the summer to prevent excessive heat. Finally there is practically never any mist or fog, so that the winter is never disagreeably raw.

TEMPERATURE, SNOW AND SUNSHINE: (from observations extending over 30 years)

AIR TEMPERATURE

	Winter months			Daily mean			
	Mean	Max.	Min.	Dec.	Jan.	Feb.	March
Yearly average							
42½° Fahr.	24°	46°	—1½°	20½°	19°	23°	33°

AVERAGE NUMBER OF WINDY DAYS

During one year	Dec.	Jan.	Feb.	March
22	1	2	2	3



Kitzbühel showing Bob run

Photo by Ritzer



Countess Paula Lamberg jumping

Photo by Ritzer



Countryside in Winter

Photo by Ritzer

SUNSHINE

	In the Town	Sunny side of valley	Shady side of valley
Dec.	5 hrs.	6½ hrs.	4¼ hrs.
Jan.	6 hrs.	7½ hrs.	5 hrs.
Feb.	8 hrs.	9¾ hrs.	7½ hrs.
March.	9¾ hrs.	11 hrs.	9¼ hrs.

SNOW

Amount of snow fallen: 19½ feet
Depth of snow on the ground: 3½ feet

WINTERSPORTS

SKI-ING: The Quality of the Snow is excellent and owing to the exceptionally favourable construction of the mountain slopes and crests and the absence of wind, there are no drifts.

You have therefore about 35 square miles of perfect snow carpets, over 3 feet deep, spread on slopes of varying steepness, free of precipices and avalanches and yet full of thrills

There is a choice of over 60 different mountain ascents with innumerable routes (with endless variations).

In addition there are the routes over the mountain crests into neighbouring valleys. The descents into Kitzbühel and the villages on the other side of the mountains are in all cases the most wonderful imaginable. The distances are from 3—5 miles, as the crow flies, and the drop 3500 to 4500 feet over surfaces with few trees and free of hedges or other obstacles. There are many „half-way houses“ — Alpine Huts — with refreshments, and near the summit of the famous Kitzbühel Horn (3500 feet above the valley and 6500 above sea level) there is a restaurant.



Grosser Rettenstein

Photo by Ritzer



Ice Hockey

Photo by Ritzer

Pension Erika



Photo by Ritzer

SKI-JUMPING: In addition to a fine take-off for experienced jumpers which is used in competitions and championship-meetings, there are several smaller jumps. Very noteworthy performances were put up in the Jumping Competitions in February 23. Of 16 starters only 4 fell, and all the others cleared from 30 to 38 meters.

In 1909 Countess Paula Lamberg of Kitzbühel cleared 28 m which has stood since then as a record for ladies. There are many licenced resident ski-teachers in Kitzbühel, who act as instructors and as guides on tours.

Kitzbühel is therefore without doubt the finest centre for Skiing in Europe.

BØBSLEIGHING: There is a new run (the best in Austria and Germany) with a drop of 925 feet in about 1 mile. Owing to the absence of trees etc. the run is free of danger. There is an electric timing apparatus and a telephone communication between the starting and the finishing posts. Excellent Bobs are on hire.

The Bob-Run is therefore fully equipped for Champanionship meetings.

TOBOGGANNING: The numerous paths through the woods and the artificial runs provide excellent sport.

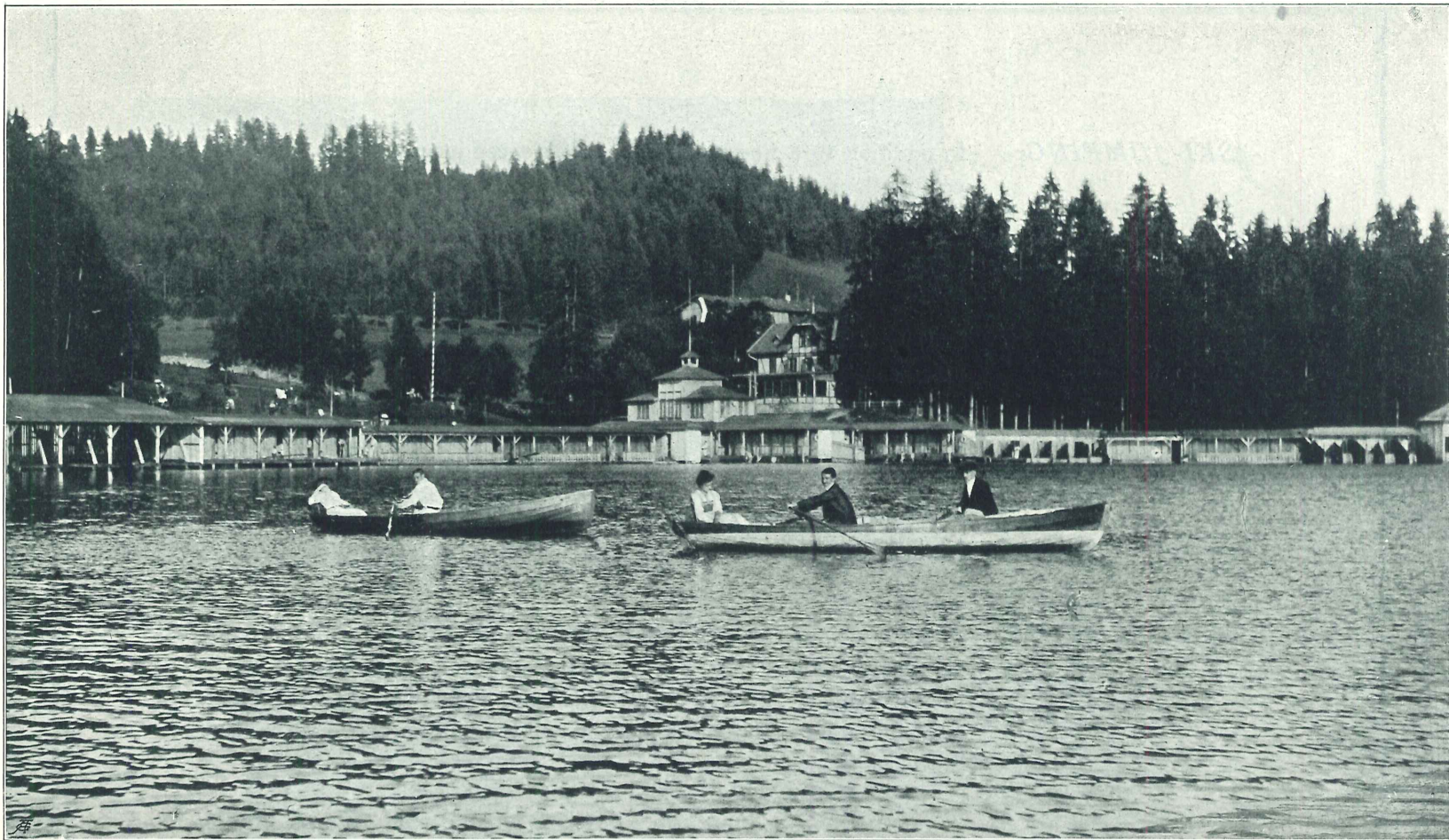
SKATING, CURLING There is an artificial rink of 35000 square feet. This is kept in perfect condition for skating, curling and hockey

ICE HOCKEY:

Illumination is provided for Night festivities, Carnivals etc.

Until the heavy snows set in (about Xmas) there is in addition an ideal sheet of ice on the Schwarz See, which usually freezes between the 24th and 30th of November.

Kitzbühel therefore provides every variety of Winter Sport within a Stone Throw of the Visitors Doors (and — as will be shown later — at a far lower cost than most other Winter resorts).



Schwarz See and Bathing Cabins

Photo by Ritzer



Entrance to Schloss Kaps

Photo by Angerer

SUMMER SPORTS AND PASTIMES

BATHING: There are finer lakes in the Alps, but certainly none to surpass the Schwarz See (Black Lake) for bathing and beauty of surroundings. During the whole of the bathing season — June to beginning of September — the water is exceptionally warm and always still. The lake gets the sun the whole day, and has therefore become famous as a sun bath. It is surrounded by pine woods which are favourite spots for picnics, and on a little rise within 50 yards of the entrance to the bathing huts, is a first class restaurant with a shady garden from which one has a wonderful view of the lake.

Rowing boats are on hire at a very moderate charge. A great charm of the bathing in the Schwarz See is the complete freedom from convention, possible owing to the secluded position of the lake. Cabins, diving boards, and all the usual accessories of a bathing establishment are provided. The Schwarz See is reached in 20 minutes by a main road and various paths which are all charming. Every few hours a bus runs between the town and the lake.

TENNIS: There are several good courts available. Tournaments and matches arranged by the Sports Club. It is hoped to lay out 4—6 fresh courts for the Summer of 1924.

CLIMBING: It would take up too much space to describe even very superficially the innumerable opportunities for lovers of climbing, but full descriptions will be found in all the leading guide books. Reference need only be made here to the local celebrity, the Kitzbühel Horn, 6500 feet high, which can be climbed easily in 2—3 hours from the centre of the town, and from whose summit an indescribably glorious view is to be had. Then, within a short distance of Kitzbühel, the wonderful range called the „Wilder Kaiser“, with peaks up to 9000 feet, including the Totenkirchl, Predigstuhl, and Fleischbankspitze, all with a sinister reputation.

MOTORING: This pastime should perhaps have been placed first in the list of attractions of Kitzbühel, for it would be impossible to find better headquarters for motorists intent on exploring the Tyrolese Alps. Kitzbühel seems to be right in the entre of the most attractive spots. To name only a few of these and their distance (based on steady driving):

ZELL AM SEE (with its glorious lake) over Pass Thurn (5000 feet) 2 hours,

LOFER, a real beauty spot, by almost level road 1 hour.

KESSEL-FÄLLE (The famous Kessel Waterfalls) along very good roads, through glorious mountain scenery, up a stiff climb to one of the most wonderful waterfalls in Europe 2 hours. Before reaching Kessel Fälle you stop to walk through the perhaps even more fascinating Sigmund Thun Klamm — a ravine with a milelong cascade of water thundering down it.



Schloss Lebenberg

Photo by Ritzer



View on the Kitzbühel Horn

Photo by Ritzer



Curling

Photo by Ritzer

KUFSTEIN. This historical spot, famous for its castle and open air theatrical performances, 1½ hours.

REICHENHALL, BERCHTESGADEN, KÖNIGSSEE, three of the most famous Bavarian Alpine Resorts and possibly altogether the most beautiful, can be visited comfortably on the same day, the farthest being only 3 hours from Kitzbühel.

Finally the bigger centres, such as Innsbruck, Munich and Salzburg are all within 4 hours distance.

Thus you can be a month with your car in Kitzbühel, spend each day running to a different place of interest and always be back comfortably for dinner. Cars can be obtained on hire.

BRIEFLY, KITZBÜHEL IS A VERITABLE ELDORADO FOR MOTORISTS

Sozial Entertainments, Catering etc. The town of Kitzbühel though small provides plenty of opportunity for passing the time pleasantly indoors. In all the leading hotels and cafés good orchestras play during the afternoons and evenings. Thé dansants are given every day and bigger dances several times weekly. Frequently carnivals are organized and in the summer outdoor festivities which compare very favourably with similar entertainments in much larger centres. For its size, Kitzbühel is an excellent shopping centre.

Postal and Telegraphic-Communications etc. These are first class. Letters from London reach Kitzbühel in 2—3 days. There are branch offices of several banks which deal in foreign exchange and undertake all kinds of banking transactions

LIST OF LEADING HOTELS AND INNS

Grand Hotel	200	beds -	bathrooms
Reisch Hotels	137	"	"
Hotel Tiefenbrunner	50	"	"
Pension Erika	28	"	"
Pension Theres	18	"	"
Pension Schloss Kaps	16	"	"
Pension Schloss Lehenberg	11	"	"



Mountain Scenery

Photo by Ritzer



Schloß Lebenberg
Loggia

Photo by Ritzer



General View of the Country Side

Photo by Ritzer

THE CLUB

The Committee: *President*: Maximilian Count Lamberg. — *Vice-Presidents*: Francis Count Schlik, Robert Pickering, Esq. — *Treasurer*: Lt. Col. Ed. Weiser. — *Substitutes*: Col. E. E. Hodgson, Dr. J. Moro, K. Schraffl. — *Founding Members*: Hirnsberger, mayor of Kitzbühel (town), Laucher mayor of Kitzbühel (suburbs), Dr. F. Seelig, A. Leitner, Jos. Herold. English founding members: Lt. Col. E. Buckley, Major V. H. Secker, Col. V. Mellor, Lt. Col. B. Morony, Lt. Campell Esq.

PURPOSE OF THE CLUB :

The club was founded with the object of exploiting the very numerous natural advantages which Kitzbühel offers as a centre for winter and summer sports. The clubs existing up to the present had already done as much as possible within their means which were unfortunately not sufficiently extensive, having been raised by subscriptions mostly out of the pockets of local residents. The Kitzbühel Sports Club is now anxious to cater for the international and particularly British visitors and will spare no efforts to bring every form of sport and entertainment to the highest level possible, and to offer in addition to its members the comforts of club rooms and a private bar. The following are briefly the privileges which members will enjoy:

WINTER - SPORTS

SKI-ING

Instructors and guides for ski-ing will be provided at a fixed tariff for members and skis can be obtained on hire at very moderate charge.

BOBSLEIGHING

The use of the bobrun will be open to members at a reduced rate. Bobs on hire. Entrances for competitions will be subject to arrangement with other clubs.

SKATING

The use of the rink will be free to members. For carnivals or special festivities tickets will be issued at a lower rate than to the general public. Skates on hire. The club will organize Ice-Hockey and Curling matches and Skating competitions.

SUMMER - SPORTS

TENNIS

The use of the Tennis Courts will be free to members. The Club will organize Tournaments.

BATHING

The Club will issue season tickets for the Schwarz-See at reduced rate and will endeavour to provide a vehicle to convey members to the lake at a reduced charge. Gymkhanas, Waterpolo matches and swimming competitions will be organized

CLIMBING-EXCURSIONS

The Club will arrange for conducted parties

MOTORING

The Club will give all information and arrange for accomodation en route etc.

SOCIAL ENTERTAINMENTS

Dances, Concerts, carnivals and other forms of entertainment will be organized by the Club.



Pension Theres *Photo by Ritzer*



Sport-Hotel (Reisch) *Photo by Ritzer*



General View of Schloss Kaps *Photo by Angerer*



Drawing Room in Schloss Kaps *Photo by Angerer*

CLUB COMFORTS

The Clubrooms are situated at the Villa Thaler (main road). The rooms are comfortably furnished. Also card room and small library. The leading English Daily Papers, Magazines and other Periodicals will be available. At the Clubrooms there is a small private Bar which will provide refreshments of the best quality, including English specialities, such as Whisky. The clubrooms will be reserved exclusively for members.

FACILITIES FOR TRAVELLING, ACCOMODATION ETC.

The Club Committee undertakes to arrange with its agents in *London* for the booking of railway journeys and hotel rooms, with or without board, and to act as intermediaries generally in all matters relating to the members journey, accomodation and comforts.

ACCOMODATION IN KITZBÜHEL.

The Club is negotiating with the Hotels and Pensions referred to on Page 11, with a view to obtaining from each an option on a number of bedrooms, which can be reserved for members through the Club's agent in London. Of the establishments mentioned the Club *particulary* recommands:

Schloss Kaps: Ancient castle within 10 minutes walk from the centre of the town. Every modern comfort, electric light, bathroom, large sitting room, own tennis court, takes in paying guests all the year round. English references.

Pension Theres: Electric light, bathrooms, central heating, open summer and winter-season, near club rooms.

Schloss Leberberg: Beautifully situated overlooking the town, electric light, central heating, bathrooms open all year sound and frequented mostly by British guests.

Pension Erika: Very favourable and sunny situation, not far from the station, electric light, pretty garden, bathrooms, open summer and winter season.

Reisch Hotels: 1. *Sporthotel* (main building) Comfortable first class Hotel with large public rooms. Own Viennese band. Reunions etc. — 2. *Annex Hotel Reisch* (number of rooms with running hot and cold water). — 3. *Annex Hinterbräu* (well known old inn). 4. *Annex Reischhof* (Villa with nice bedrooms, balconies etc.)

Grand Hotel: Large Hotel, electric light, central heating, modern conveniences.

Hotel Tiefenbrunner: Well known old Inn.

TERMS OF SUBSCRIPTIONS ETC.

There will be two classes of members - ordinary (regular) and temporary members, elected by secret ballot. Members of approved London Clubs are eligible for membership without ballot.

Ordinary members pay an entrance fee of £1.— and a yearly subscription of £2.—. Ladies pay the same annual subscription but no entrance fee.

Temporary members (ladies and gentlemen) pay no entrance fee but the following subscriptions:

30/— per season (summer or winter) or
15/— per month or
10/— per 15 days or
7/6 per week.

Ordinary members' wives and daughters become members of the Club without paying subscription.

Absent members. Members who are absent (do not use the Club) for a period exceeding one year retain membership against payment of an annual subscription of 5/—.
The above amounts can be paid in £ Sterling or the equivalent in Austrian Crowns, at the days rate of exchange.

APPENDIX: GOLF CLUB.

The laying out of a Golf Club of 9 holes is contemplated for Summer 1924. The ground is assured. The realisation of this project depends on the funds available and in order to assist the club in coming to a decision it would be greatly welcomed if candidates for membership would kindly communicate with the secretary of the club stating, whether they would be prepared to subscribe towards the extra capital required for the construction of the Golf course.

A subscription of £ 5.— from each member would probably be sufficient for the purpose. Such subscriptions would not be called up until the whole sum required had been definitely promised.



General views of the Country Side

Photo by Ritzer

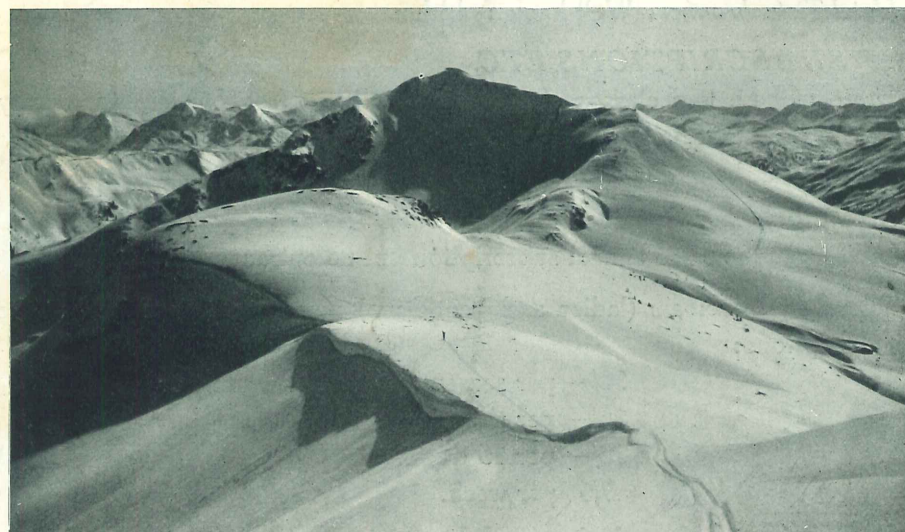


Photo by Ritzer